

**the lost
buildings of**

DRUM BARRACKS

**by
william a. lockett**

journal 1974-1975

Historical Society of Long Beach

the lost
buildings of

DRUM BARRACKS

by
W. A. Lockett

journal 1974-1975
historical society of long beach



From The President

The Historical Society of Long Beach is pleased to present this study of a landmark of our area. The Drum Barracks played an important role in the Southern California of yesteryear.

Our Society is dedicated to the study and preservation of our historical heritage. We invite all who are interested in this purpose to join with us in this endeavor, and to help us honor those who made it possible.

On behalf of the Society, I wish to thank Mr. William A. Lockett for this very fine presentation of a part of our area history.

Sincerely

Loretta Berner

Loretta Berner, President
Historical Society of Long Beach

THE DRUM BARRACKS

The Drum Barracks served the Army of the Southwest from 1862 to 1866. It was here that men were mobilized and trained for duty with the Union Army during the Civil War. It was from here that the "California Column" under Colonel Carleton left for Arizona and New Mexico to hold those states for the Union. Drum Barracks became the focal point for men and materials destined for all parts of the southwest. When the Civil War ended and the Indians were no longer a threat, the role of the Drum Barracks diminished. Other means of supply were available for the center of military activity which had moved eastward. Finally, in 1873 the Army surrendered its interest in the facility. The land was returned to its former owners, Banning and Wilson, and the buildings were auctioned off.

Today the Drum Barracks is represented by the one remaining Officers Quarters. It is ironic that of the two buildings that housed officers, the lesser structure has survived these many years. The Powder Magazine also survives, enclosed within a wood frame structure.

Without the other buildings as silent reminders, the popular concept of the Drum Barracks has been focused on the surviving Officers Quarters. It has been cast in the role of being "The Drum Barracks". In reality, the Drum Barracks consisted of

approximately 60 acres of land which sited 22 buildings. In addition, there was the Supply Depot adjacent to Banning Wharf one mile to the South. All in all, it was a very impressive array of facilities for that time and place. The one million dollar construction cost was spoken of in breathless disbelief.

The National Archives has two surveys of the Drum Barracks. In 1865 A.G. Hansen made a detailed survey. He located the major structures and indicated the overall dimensions and use of each building. In 1868 George Wheeler made a similar survey, but he was not as generous with his information. No building dimensions were given and only the building uses were designated.

In June of 1872, Lieutenant Craigie made a final inspection and report. The Army had been gone for six years with only a civilian to look after the Government's interests. His report was in the nature of a feasibility study. He compared the costs of salvaging the building materials for re-use elsewhere with the cost of new materials. His report included small sketches of the floor plans, a list of materials and a description for each building.

There are photographs of several of the lost structures. The best photographic material is of the Guard House. The appearance of all four sides has been included in two photographs. A comparison of these photographs with the survey information shows that subsequent to the military use, there were alterations

for other uses. One interior photograph indicated that, at least for a time, the Guard House was used as a residence.

There is one photograph of the lower portions of the Powder Magazine. Craigie described the Powder Magazine as having been made of "stone and brick" with an "arched roof". The photograph confirms the kinds of materials used but unfortunately omits the arched roof. The magazine has been surrounded and encased for many years by a wood frame structure used as a market and now as a residence. Perhaps someday it will be released from its present confinement to join the Officers Quarters.

There is a photograph of the Commanding Officers Quarters. The picture is of poor quality and at the time it was taken, the building had already fallen into ruin. However, there remains enough information to combine with the Craigie material to allow a good reconstruction of this structure.

All other buildings were reconstructed on the basis of the Craigie report and supporting evidence from the Hansen and Wheeler surveys. Generally, the smaller structures were utilitarian and of necessity very simple. One should remember that construction was done under the pressures and urgencies created by the Civil War. The very thin veneer of population at that time also suggests some limitations in the availability of skilled workmen. These conditions apply

explain why some of the less important buildings were without foundations and constructed in rather crude ways.

These sketches are intended to show the extent of the development of the Drum Barracks and to catch the flavor of the time. The stage has been recreated upon which the drama of those years was played. A few of the players went on to play larger roles upon other stages and to make their place in history. This roster would include such names as General Winfield Scott Hancock and General Philip Henry Sheridan. Many of the players moved obscurely and silently across the stage, destined never to return; but each in his small unconscious way built the platform from which this great State and Nation rose.

Picket Fence N. 72° 35' E. 1723 feet. or 26.12 chs

MAP

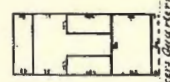
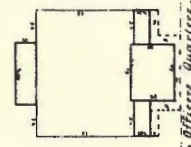
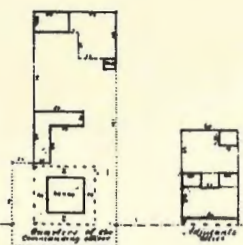
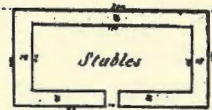
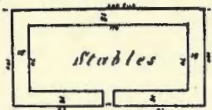
DRUM BARRACKS

Wilmington, Los Angeles County, California
containing 59 1/2 acres of land.

Surveyed April 1868 by G. Hansen

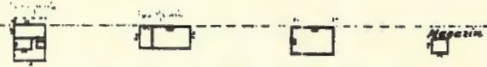
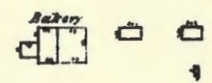
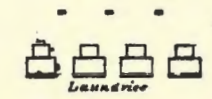
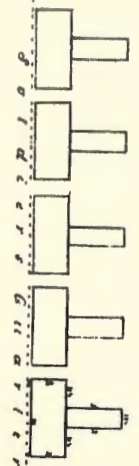
Variation of magnetic needle 17° W. E.

Scale of one inch to 100 feet.



PARADE GROUND

GARDEN.

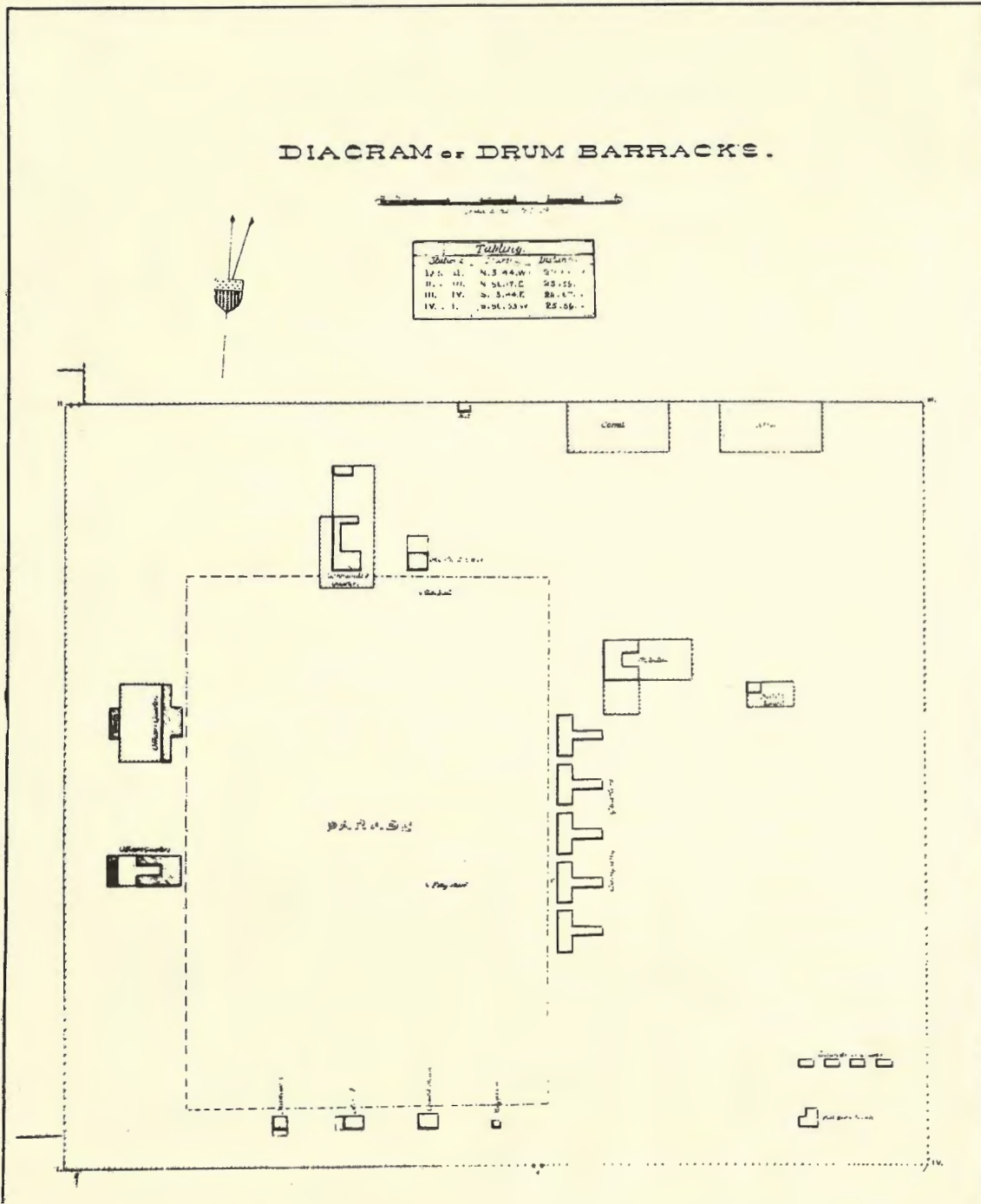


Picket Fence N. 17° 35' W. 1500 feet. or 23.23 chs

Picket Fence N. 17° 25' W. 1600 feet.

Picket Fence N. 72° 35' E. 1723 feet.

DIAGRAM OF DRUM BARRACKS.



MAP
OF
THE MILITARY RESERVATIONS
FOR
DRUM BARRACKS
&
U. S. DEPOT
AT
WILMINGTON
CALIFORNIA.

Surveyed under the direction of
Geo. M. Wheeler
Lieut. of Engineers
December 1866.

Geo. K. Turner
of the Ordnance Dept.

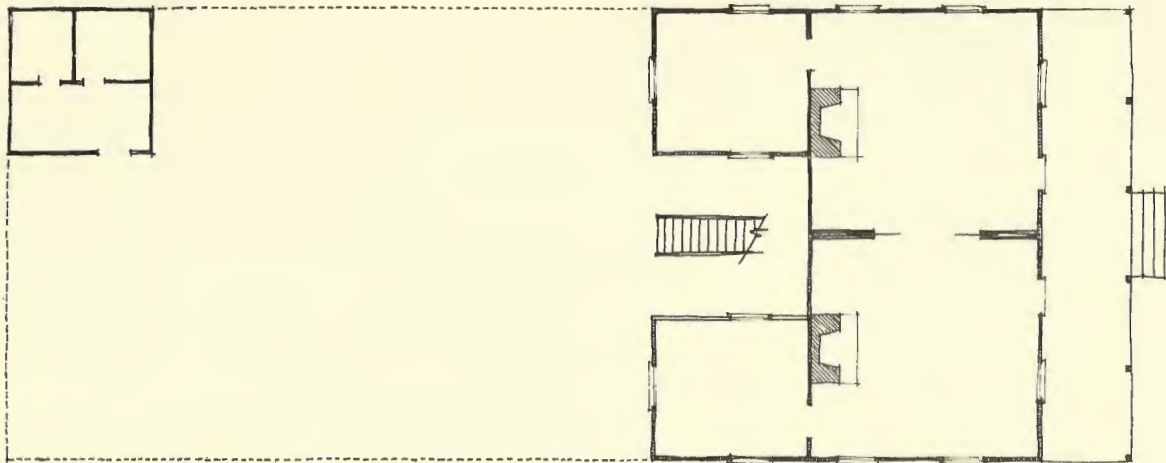
LEGEND.

Areas. 57 2 26 x 5.0. 17
Latitude. 33° 46' 10" W
Longitude. 110° 45' 47" W
Altitude. 7000 feet level
Variation. 25° 43' 35"

Approved & recommended
Geo. M. Wheeler
Lieut. of Engineers

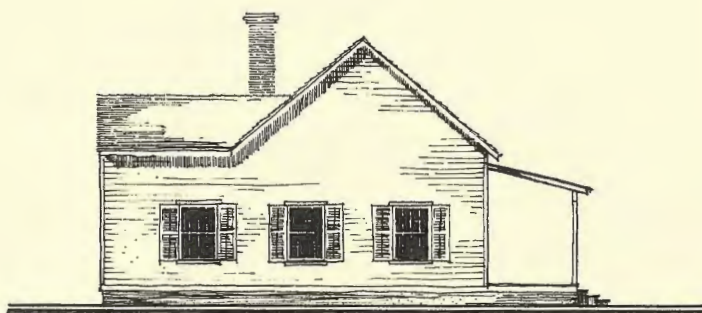
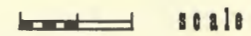
As true & accurate as by the original
map on file in this Office.
Engineer Office Headquarters West of California
May 11th 1876.

Geo. M. Wheeler
Lieut. of Engineers.

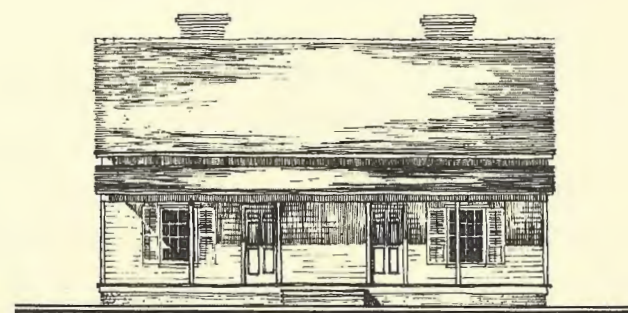


ADJUTANT'S
OFFICE

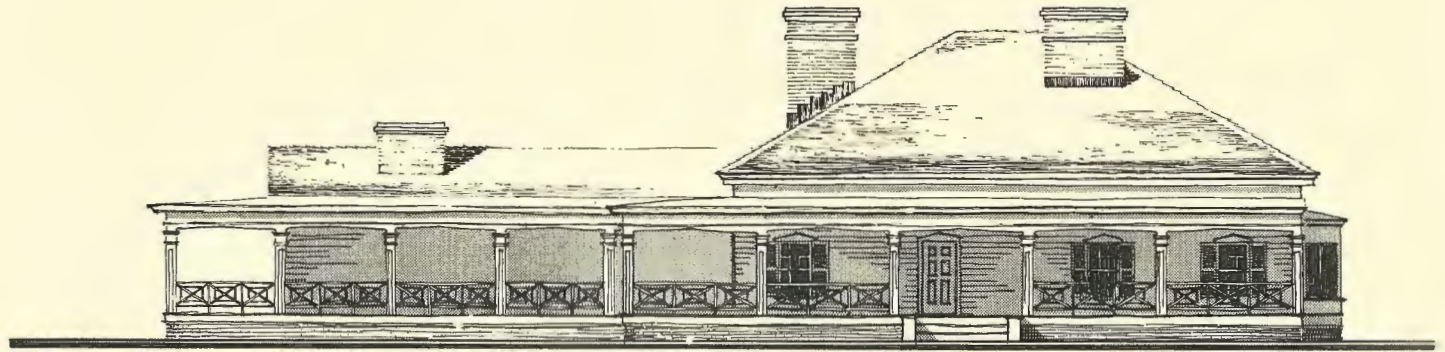
PLAN



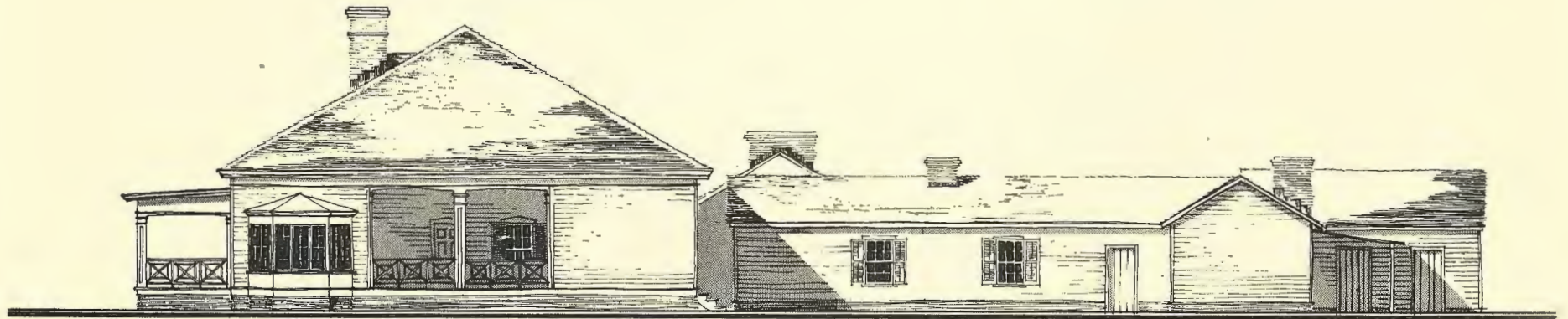
LEFT SIDE



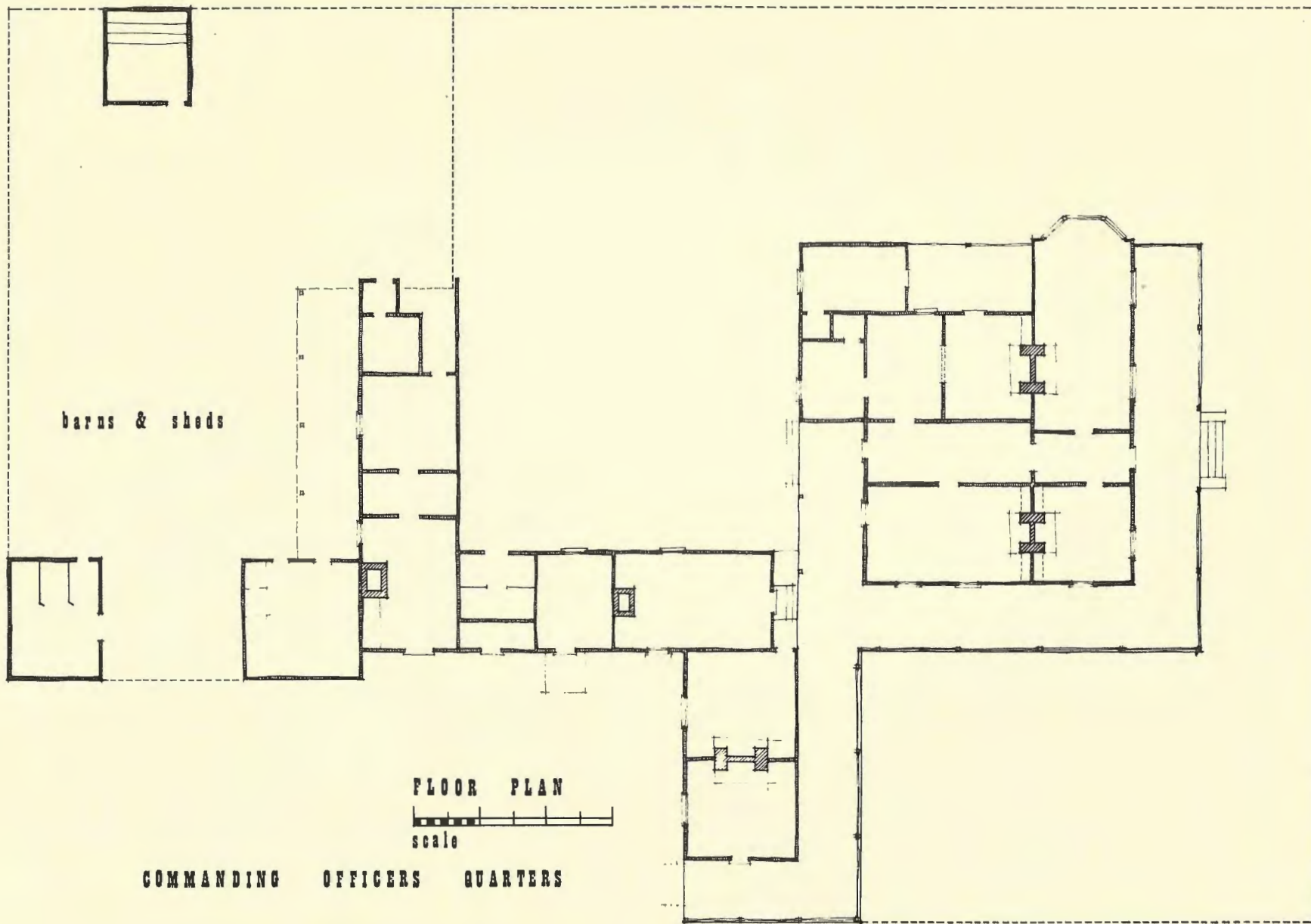
FRONT



FRONT ELEVATION

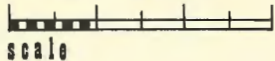


RIGHT SIDE

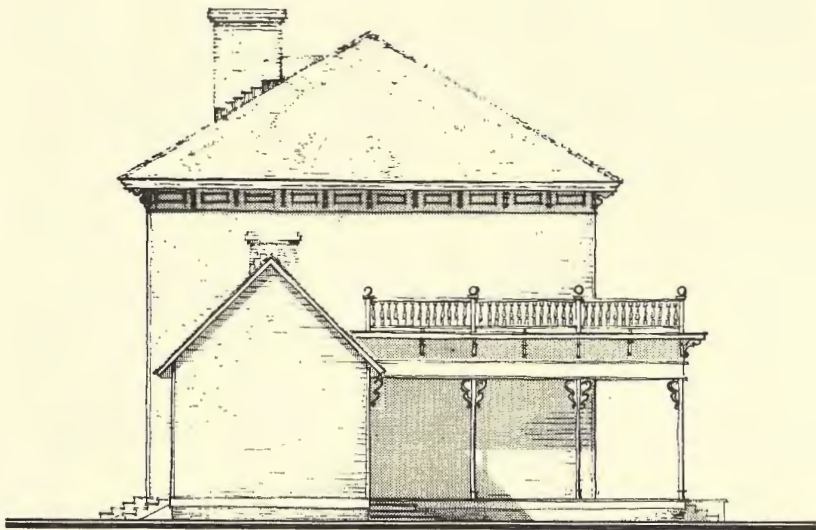


barns & sheds

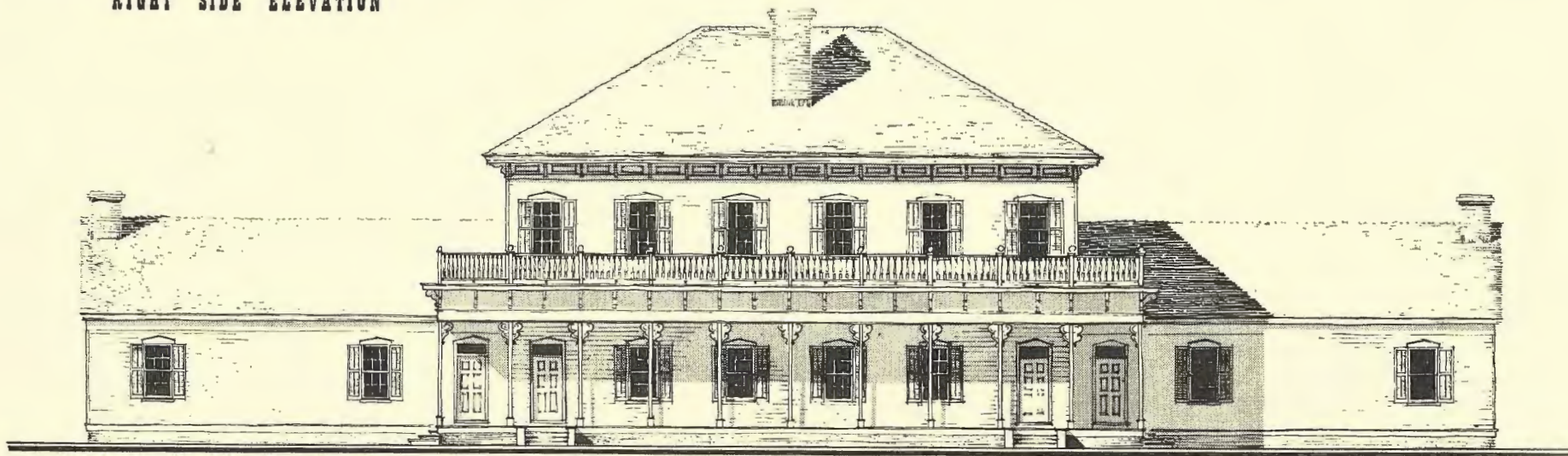
FLOOR PLAN



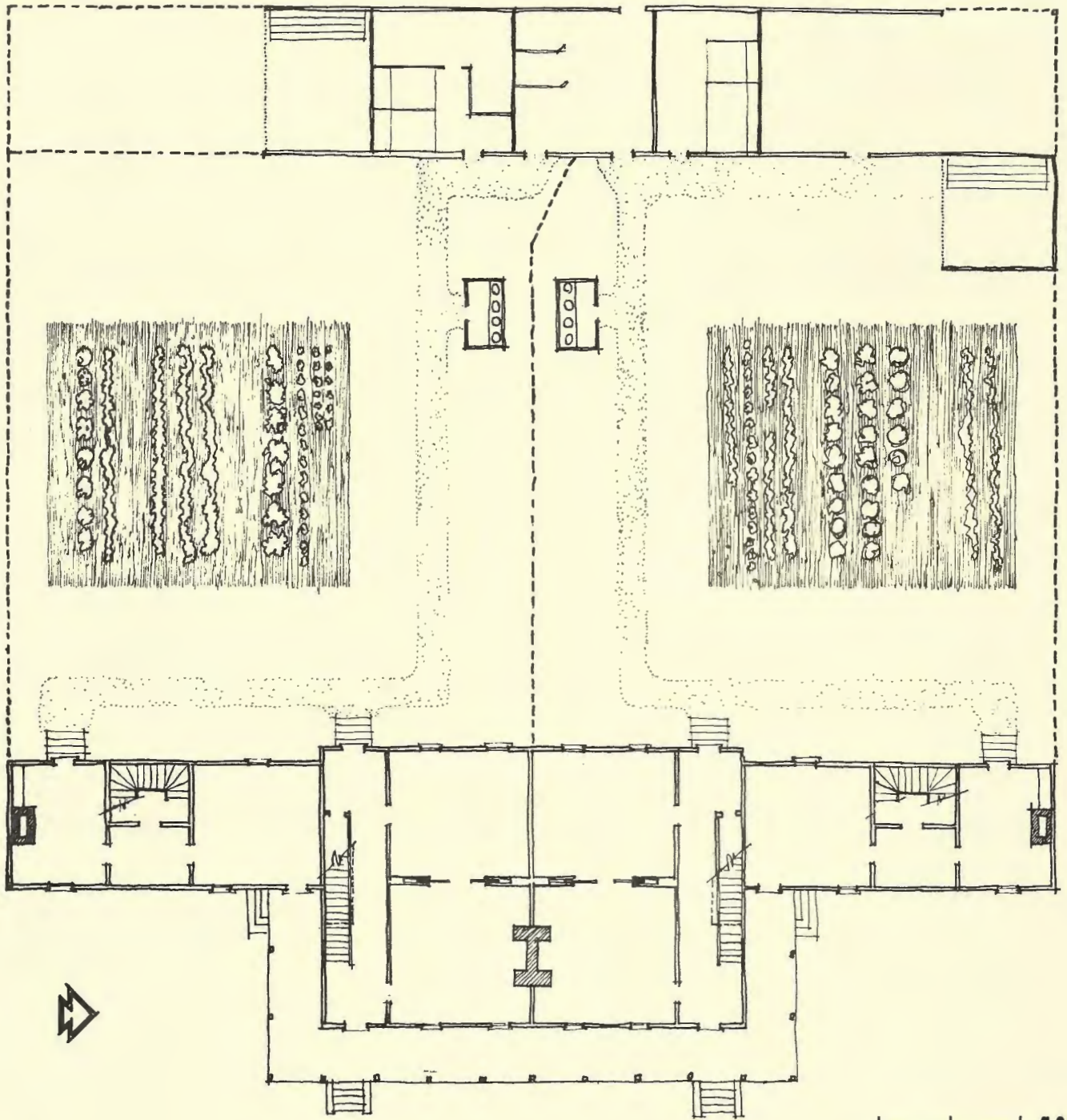
COMMANDING OFFICERS QUARTERS



RIGHT SIDE ELEVATION

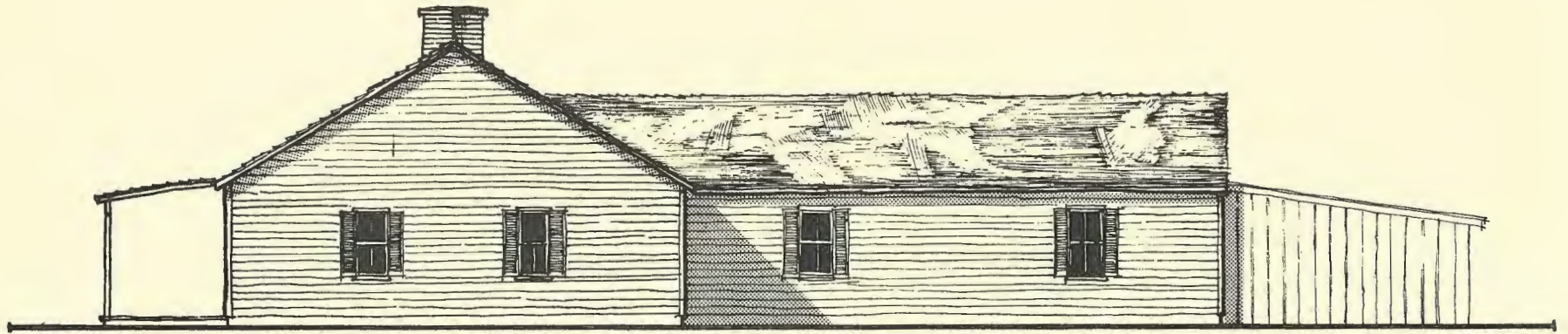


FRONT ELEVATION

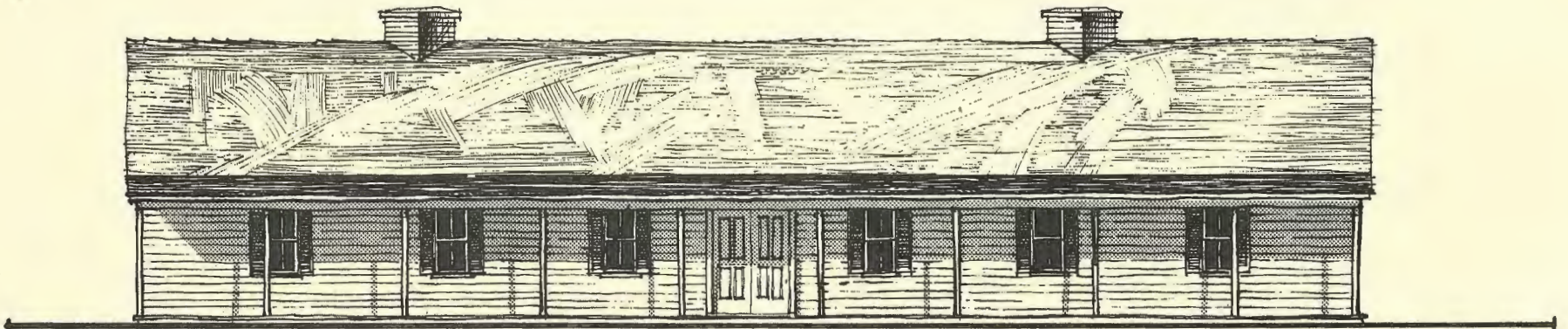


first floor plan

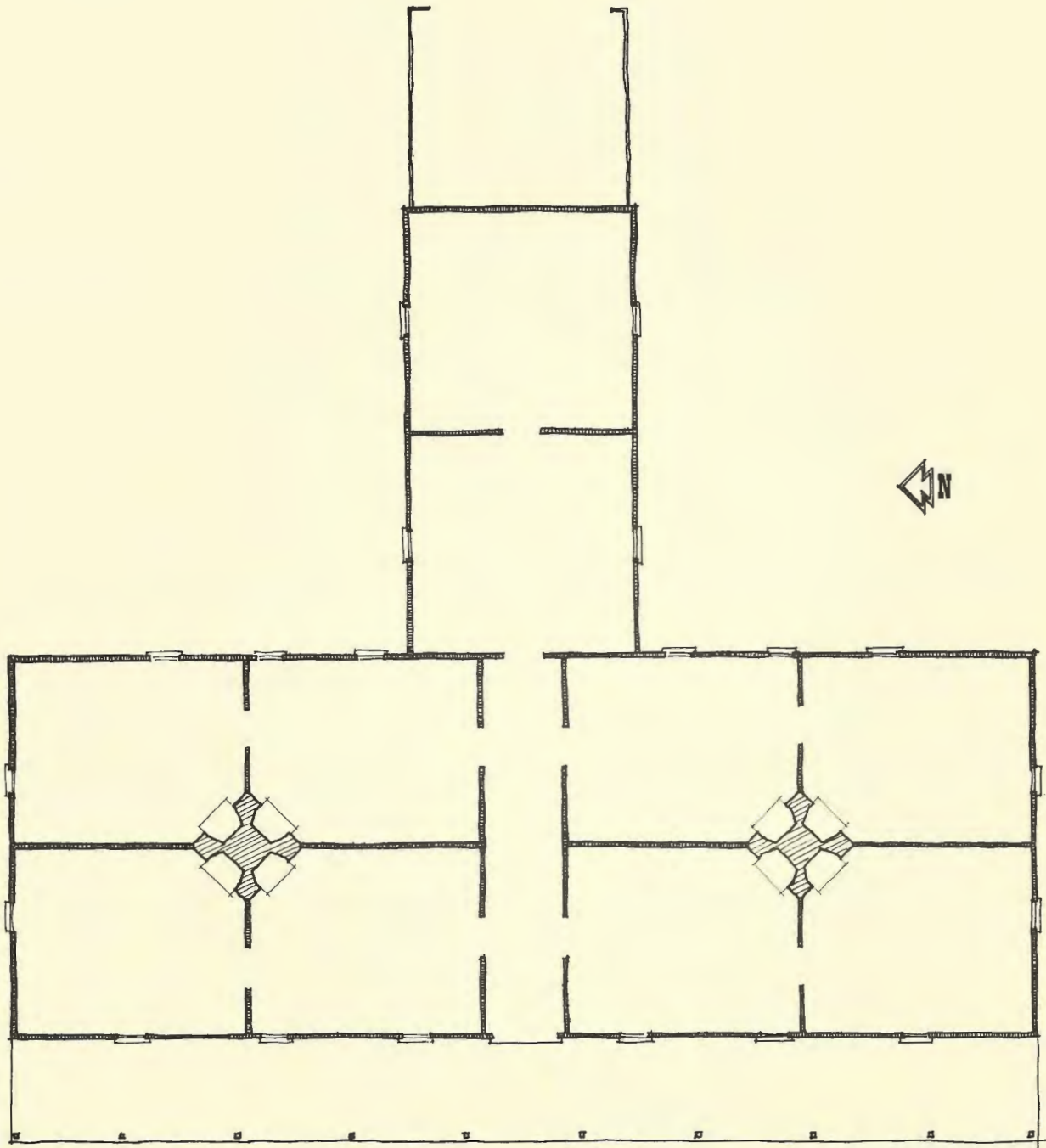
OFFICERS QUARTERS



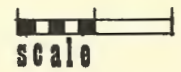
RIGHT SIDE ELEVATION

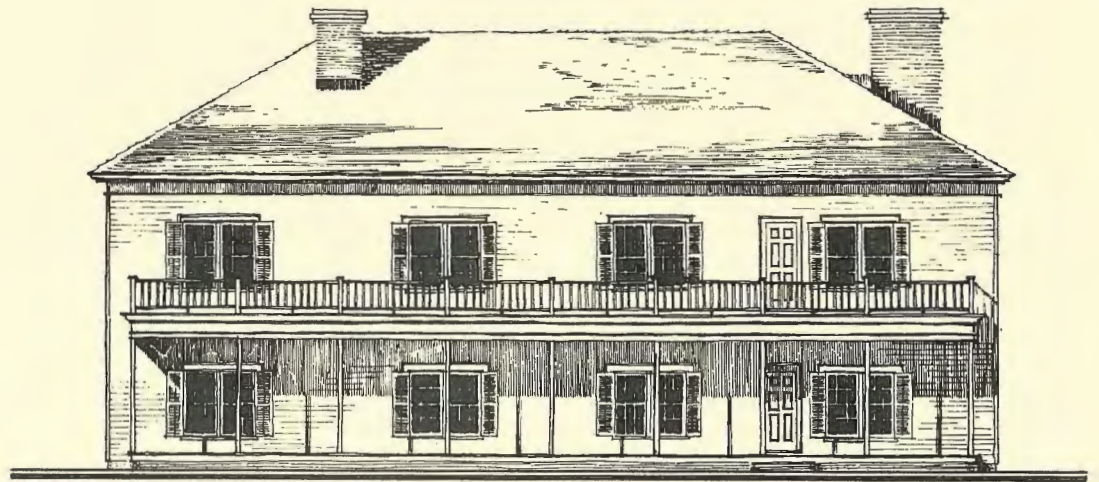


FRONT ELEVATION




COMPANY BARRACKS

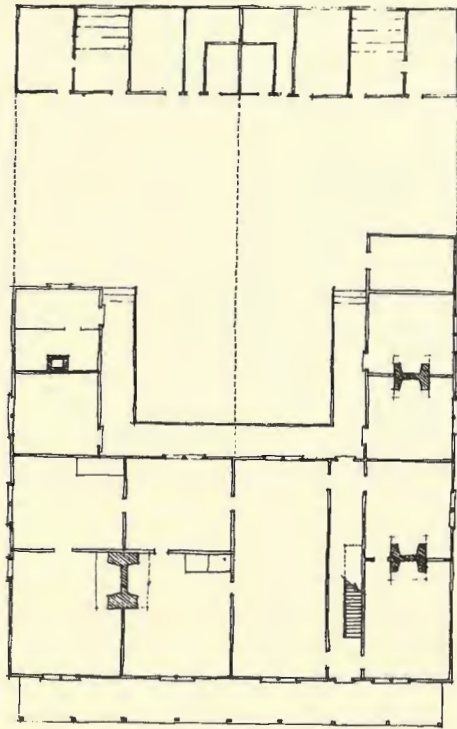




FRONT

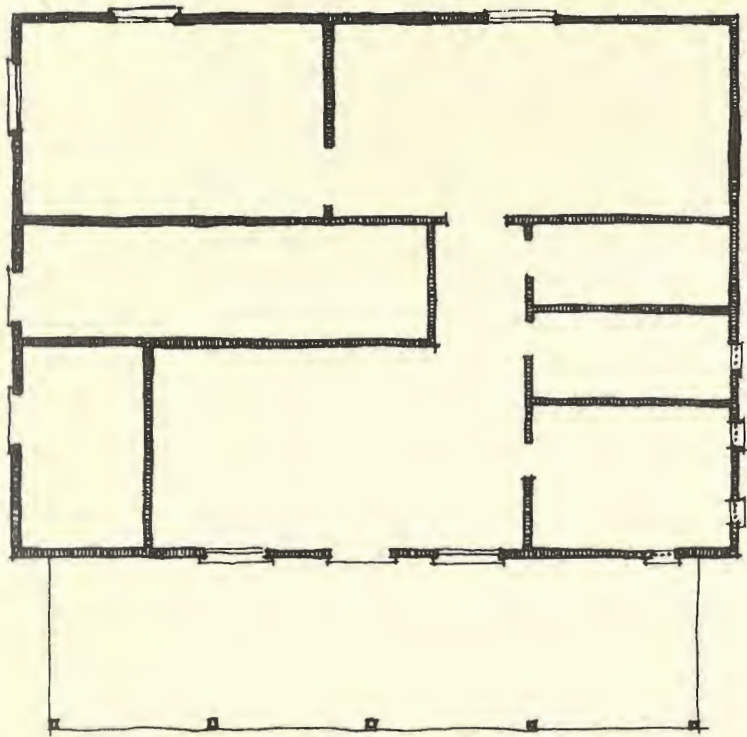
scale 

POST HOSPITAL



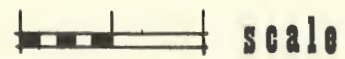
PLAN

scale 

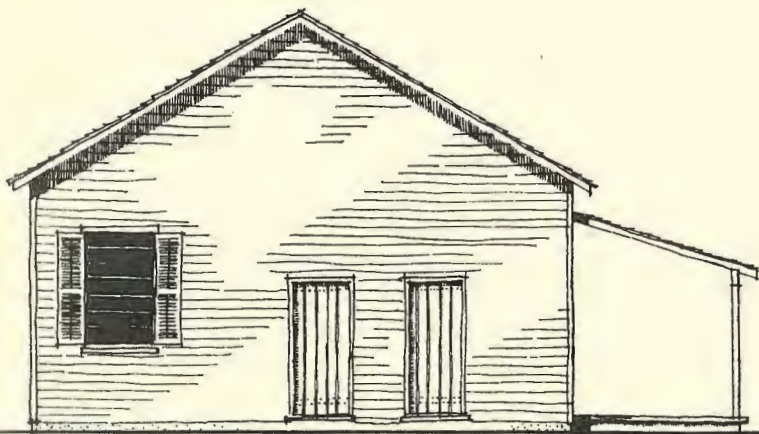


plan

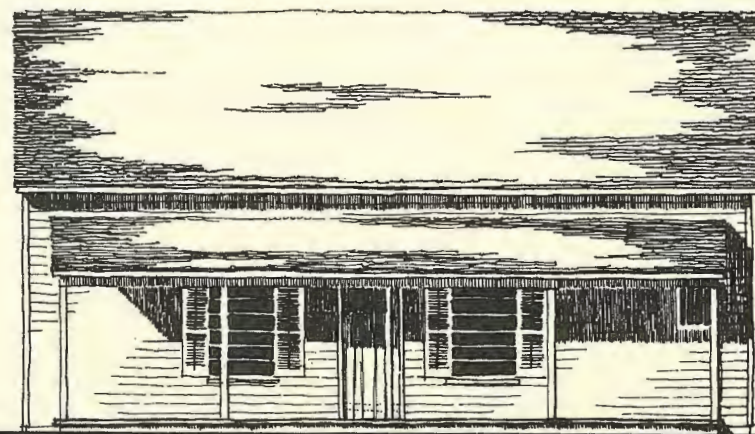
GUARD HOUSE



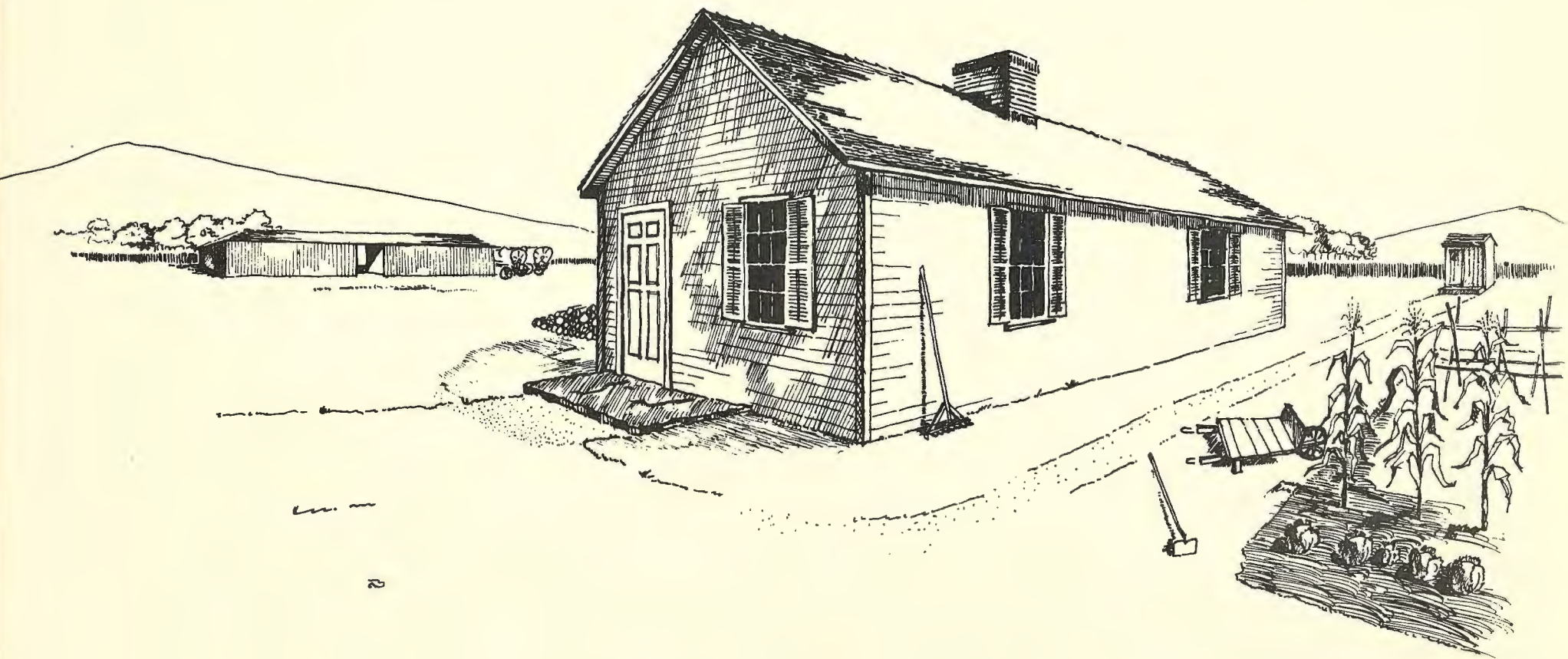
scale



LEFT SIDE

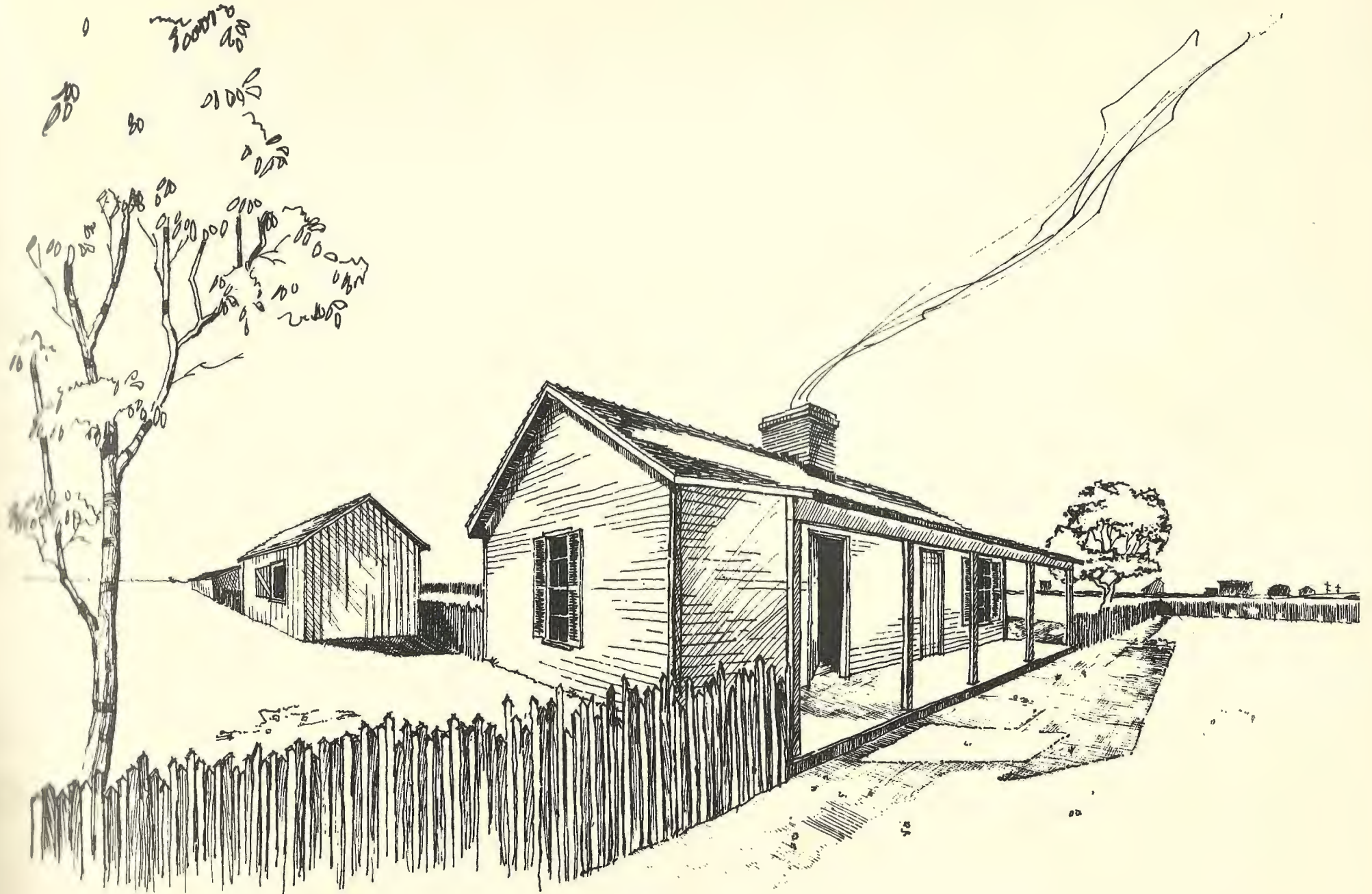


FRONT

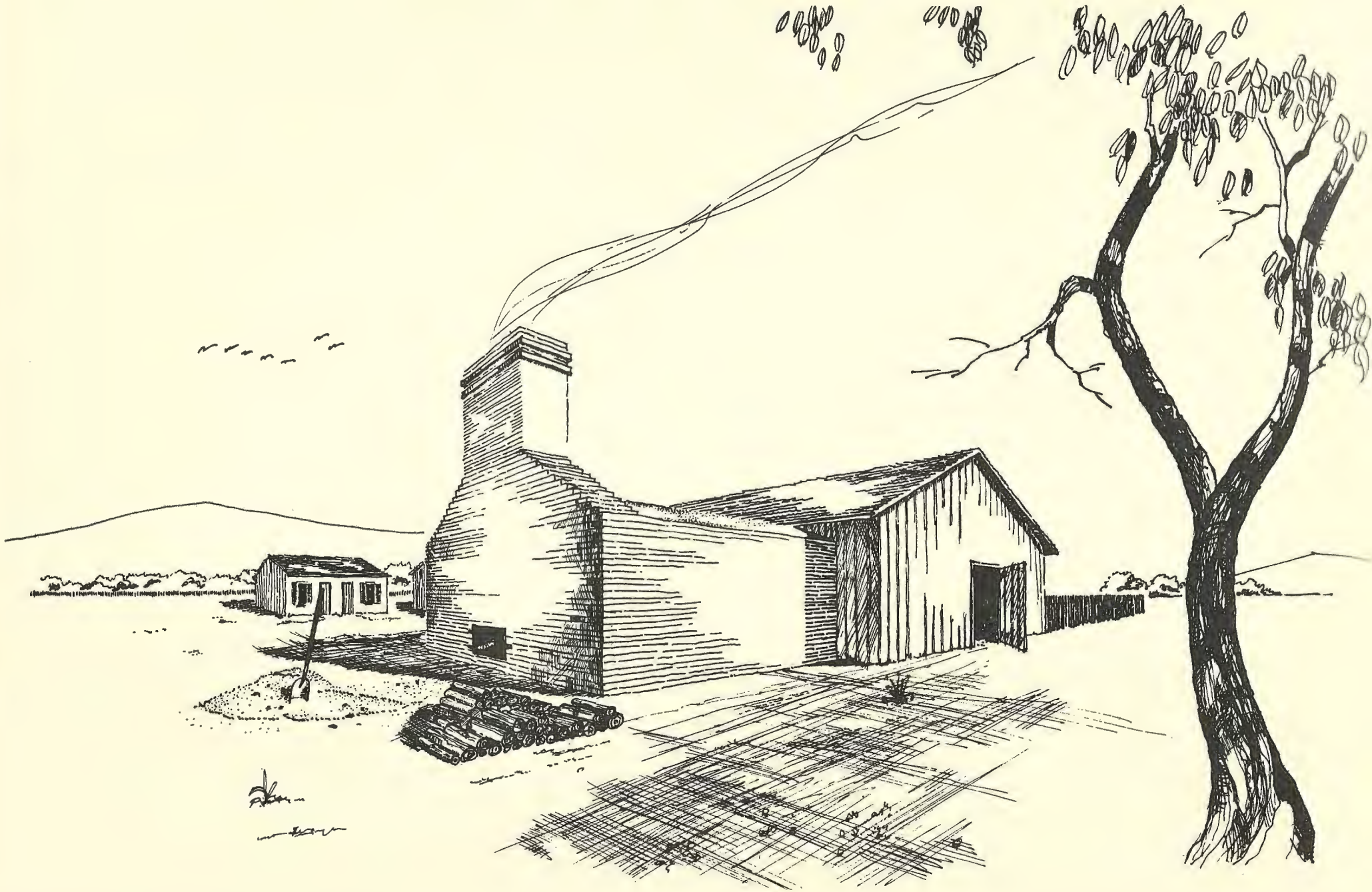


HOSPITAL STEWARD'S QUARTERS

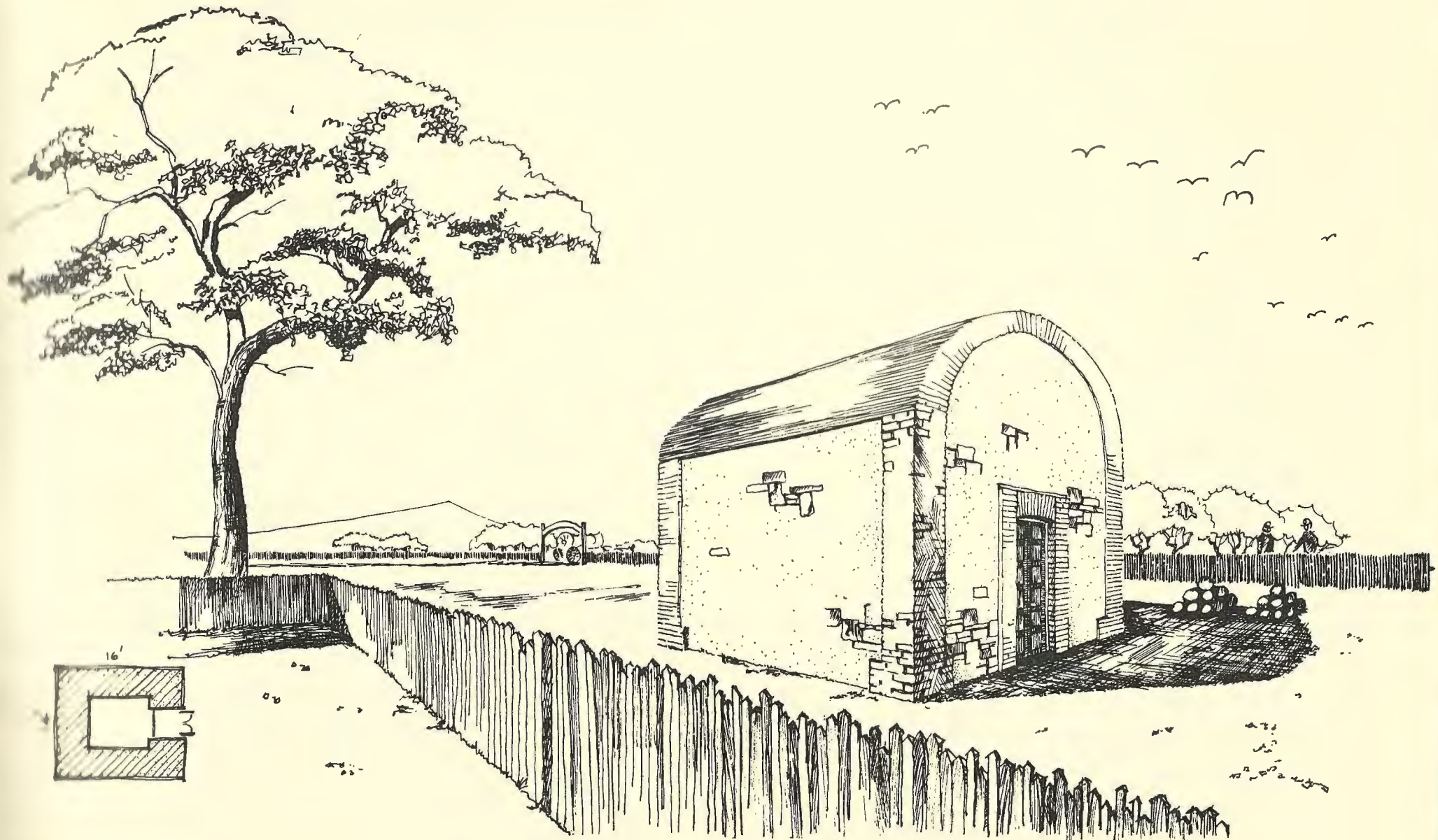
MUSICIANS QUARTERS



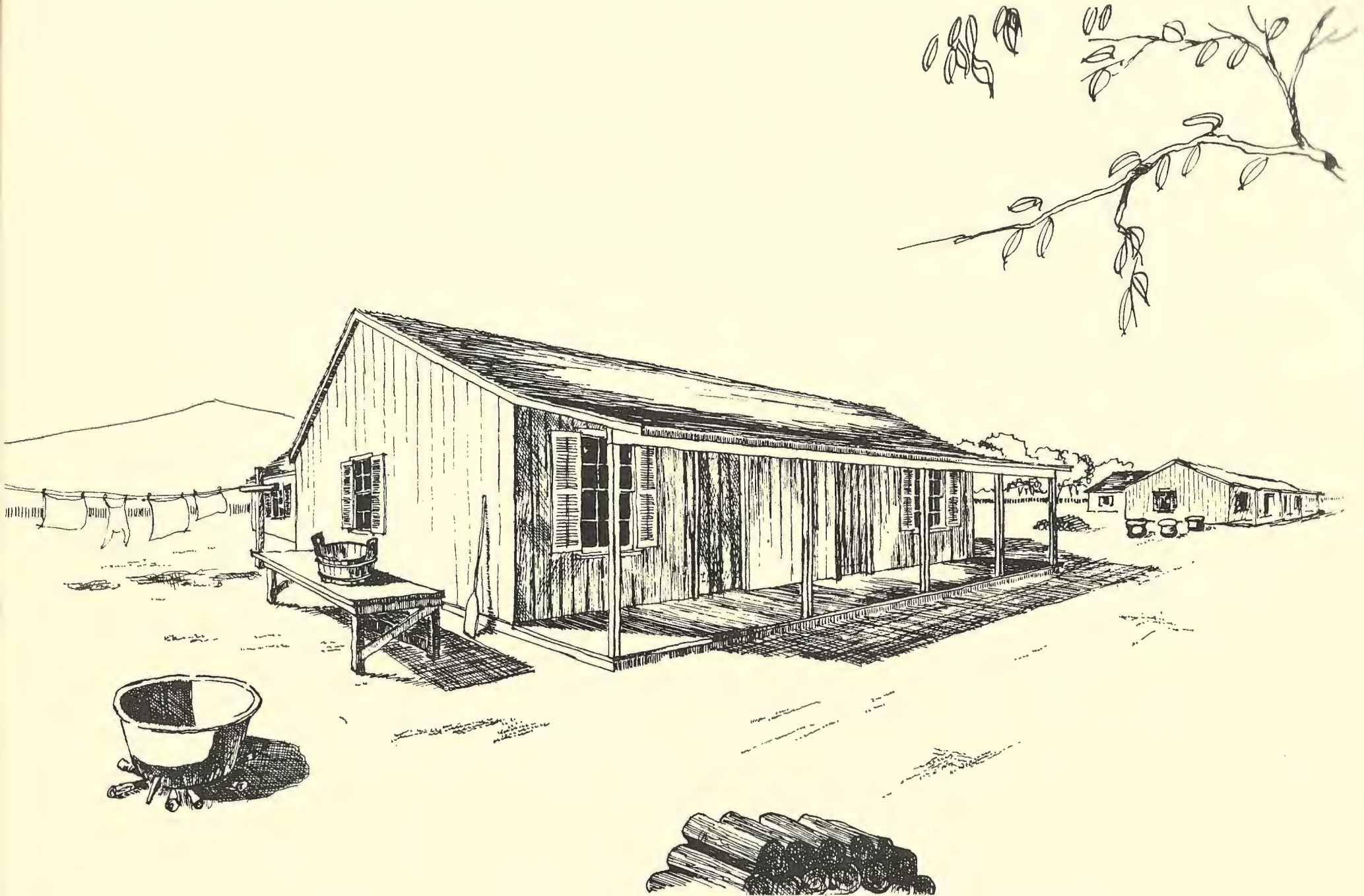
BAKE HOUSE

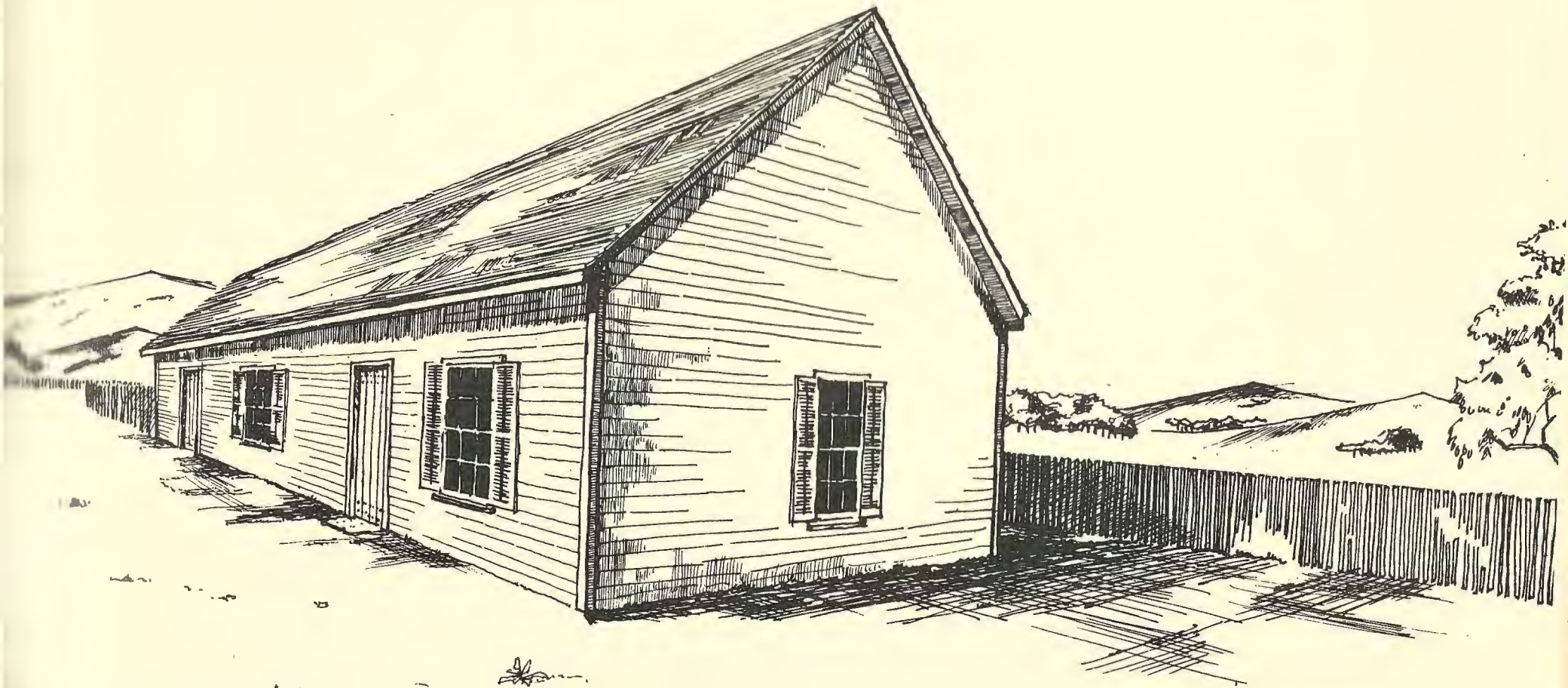


MAGAZINE



LAUNDRESS QUARTERS





PUBLIC QUARTERS



Today the Officers Quarters can still be seen at 1053 Carey Avenue in Wilmington, California. It is the last and only major structure surviving. The Powder Magazine also survives within another structure. For many years the Officers Quarters, now known as the "Drum Barracks", was maintained and occupied by Mr. Thomas Kaveny. He lavished loving care upon this building and was responsible for its present good condition. After his death, the property was in danger of being demolished. The Cultural Heritage Board intervened and held it safe until the Society for the Preservation of the Drum Barracks was formed. It was through the efforts of this Society that title was finally vested in the City of Los Angeles. Some restoration and preservation will soon be undertaken and in the near future, it will be open to the public. Finally safe for future generations to enjoy and a reminder of their heritage.